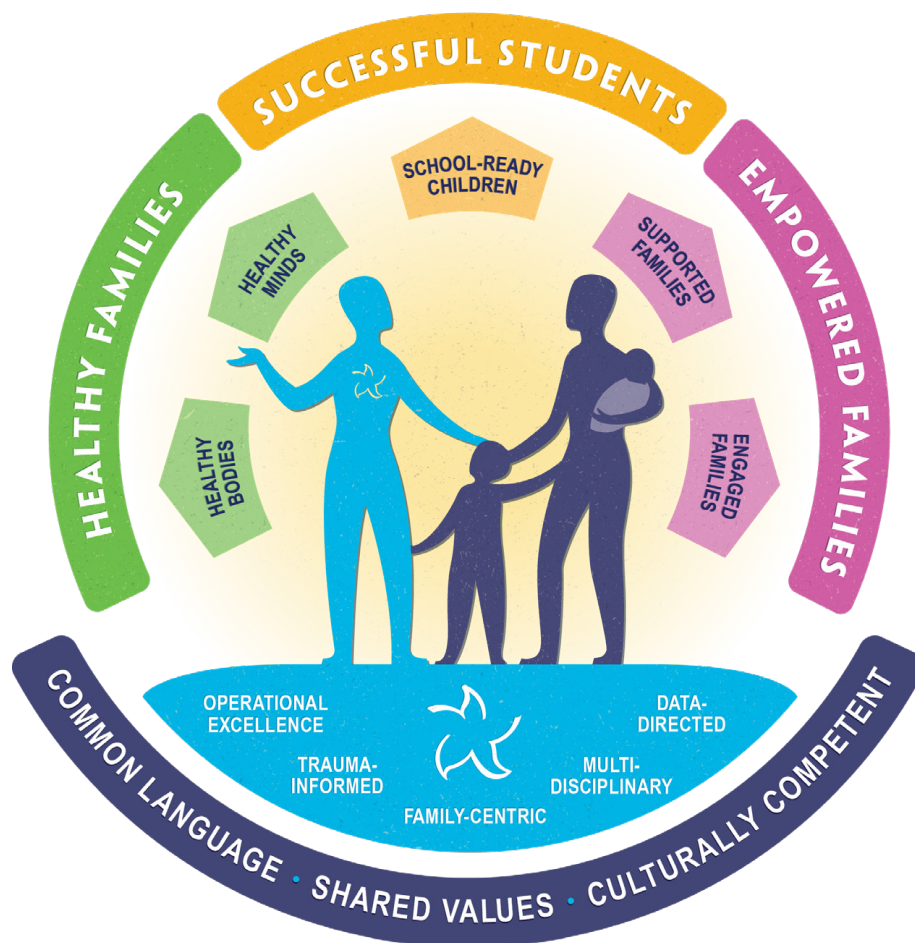


BLUEPRINT FOR BRIGHTER FUTURES

The Starfish Blueprint for Brighter Futures is an integrated strategy that articulates and defines a holistic approach for children and families to thrive. It will steer our course so that we are aligned as One Starfish to ensure three primary outcomes: Healthy Families, Successful Students, and Empowered Families.

**WE ARE REINVENTING A SOCIAL SERVICE AGENCY
THROUGH THE LENS OF CHILDREN AND FAMILIES**



ONE STARFISH

HEALTHY FAMILIES

Families are supported so their physical and mental health needs are holistically addressed.

SUCCESSFUL STUDENTS

Academic and social success are achieved through high-quality early childhood education and addressing behavioral health needs.

EMPOWERED FAMILIES

Families actively partner with us to identify and achieve goals; parents and children always have a voice at Starfish.



Five core components serve as our foundation and are further strengthened by:

COMMON LANGUAGE • SHARED VALUES • CULTURAL COMPETENCE

OPERATIONAL EXCELLENCE: Starfish has sustainable funding; high-quality, credentialed staff; equitable and inclusive practices; safe, welcoming buildings; systems for continuous quality improvement; and an engaged and invested leadership and board.

TRAUMA-INFORMED: Starfish incorporates a culture of trauma care into every aspect of our work. Traumatic events can affect behaviors in the here and now, and impact a child or parent's future life and well-being. We work to help children and families through past traumas with trauma-informed care and compassion.

FAMILY-CENTRIC: The culture at Starfish values all parents, and we proactively collaborate to serve and support them. Starfish parents are active decision makers; for example, serving as board members and on policy councils.

MULTI-DISCIPLINARY: Services throughout Starfish are understood by all staff members and are promoted across departments and between specialties. This allows us the flexibility and creativity to use all resources to best address family needs and challenges.

DATA-DIRECTED: Data generated from internal program outcomes and external research and resources is used to evaluate and make improvements. Data is connected throughout the agency, enabling seamless information sharing across programs and services.



Guide

Each family will have a Starfish Guide to steer family members toward services and address barriers that may arise. Guides build trusting relationships with families and work toward each family's unique goals.



Family

Families are involved every step of the way and in all decision-making. They are empowered to reach for their personal definition of success. At the core is raising a happy, healthy child.

ABOUT STARFISH

Founded in 1963, Starfish Family Services is a nonprofit human service agency, recognized as a champion for families who lack access to essential resources in metropolitan Detroit. Serving over 4,000 children and their families annually, we provide high-quality programs and support services that focus on early childhood education, behavioral health wellness, and empowered parents. Through our holistic approach, we supply access to the right resources at the right time so that our community families achieve long-term success.



**Strengthening families to create
brighter futures for children**

starfishfamilyservices.org